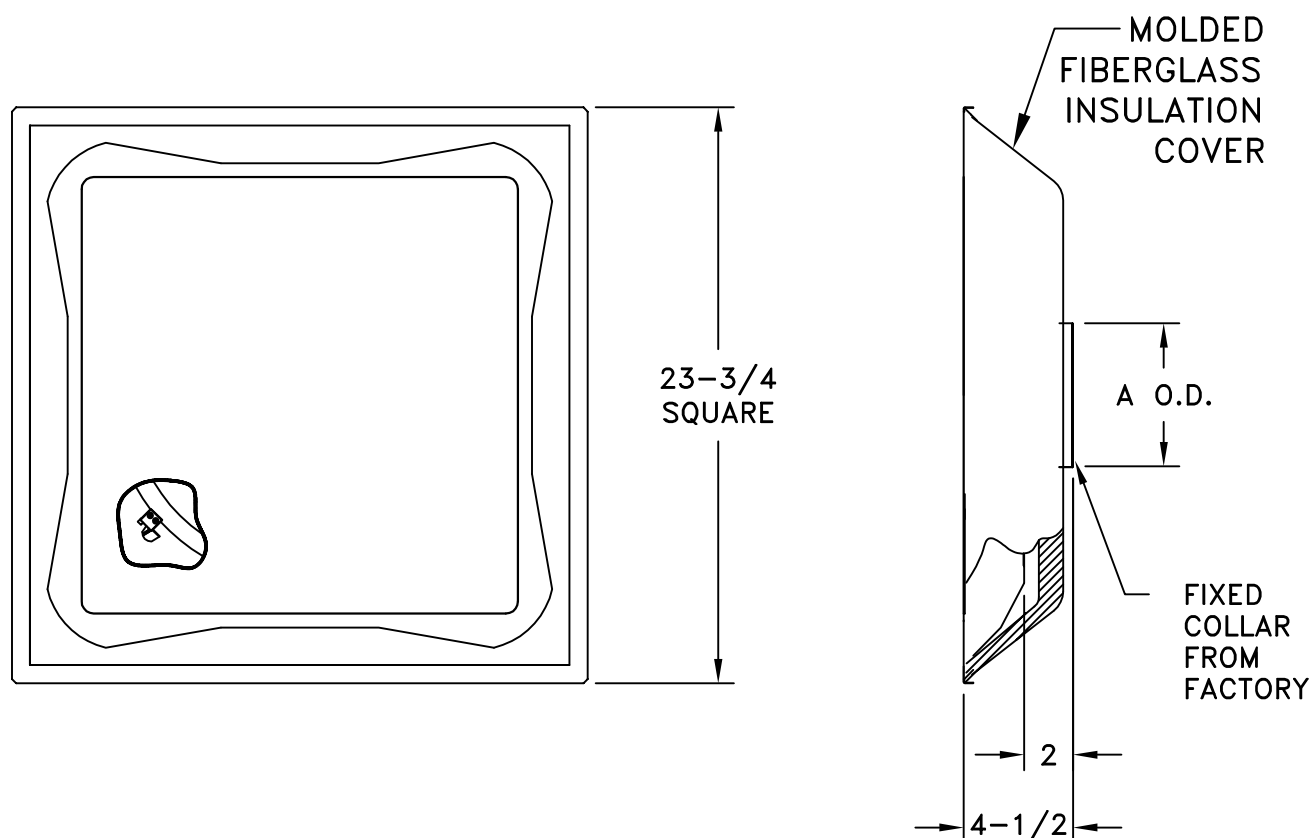


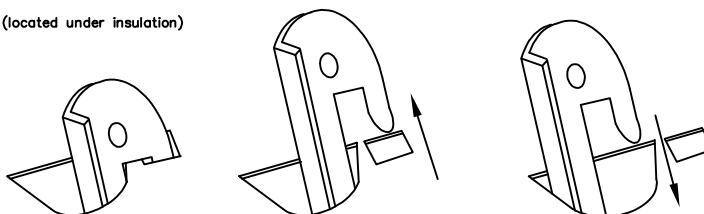
MODEL 1590**INSULATED DETACHABLE PLATE DIFFUSER****4-WAY DEFLECTION**

STANDARD INDUSTRY TOLERANCES APPLY. SPECIFICATIONS SUBJECT TO CHANGE WITHOUT NOTICE.

**REMOVING FACE PLATE:**

1. REMOVE BLACK PUSH PINS FROM HOOKS.
2. PUSH THE FACE PLATE TOWARDS THE BACK PANEL. THIS WILL DIS-ENGAGE THE HOOKS FROM THE BACKSIDE PANEL SLOTS (DETAIL A).
3. ROTATE THE FACE PLATE COUNTER-CLOCKWISE AND PULL PLATE AWAY FROM BACK PANEL AND HOOKS THRU THE SLOTS.

(located under insulation)



Model 1590 is an architecturally pleasing plate style lay-in T-bar diffuser offering 360° air diffusion. It is offered in 6"-14" fixed collar sizes with optional model R-22, R-32, and R-42 round dampers available. Furnished with a R6 molded fiberglass back to insulate the steel back panel. Steel construction and standard finish is white.

PROJECT: _____
 ARCHITECT: _____
 ENGINEER: _____
 CONTRACTOR: _____
 LOCATION: _____

