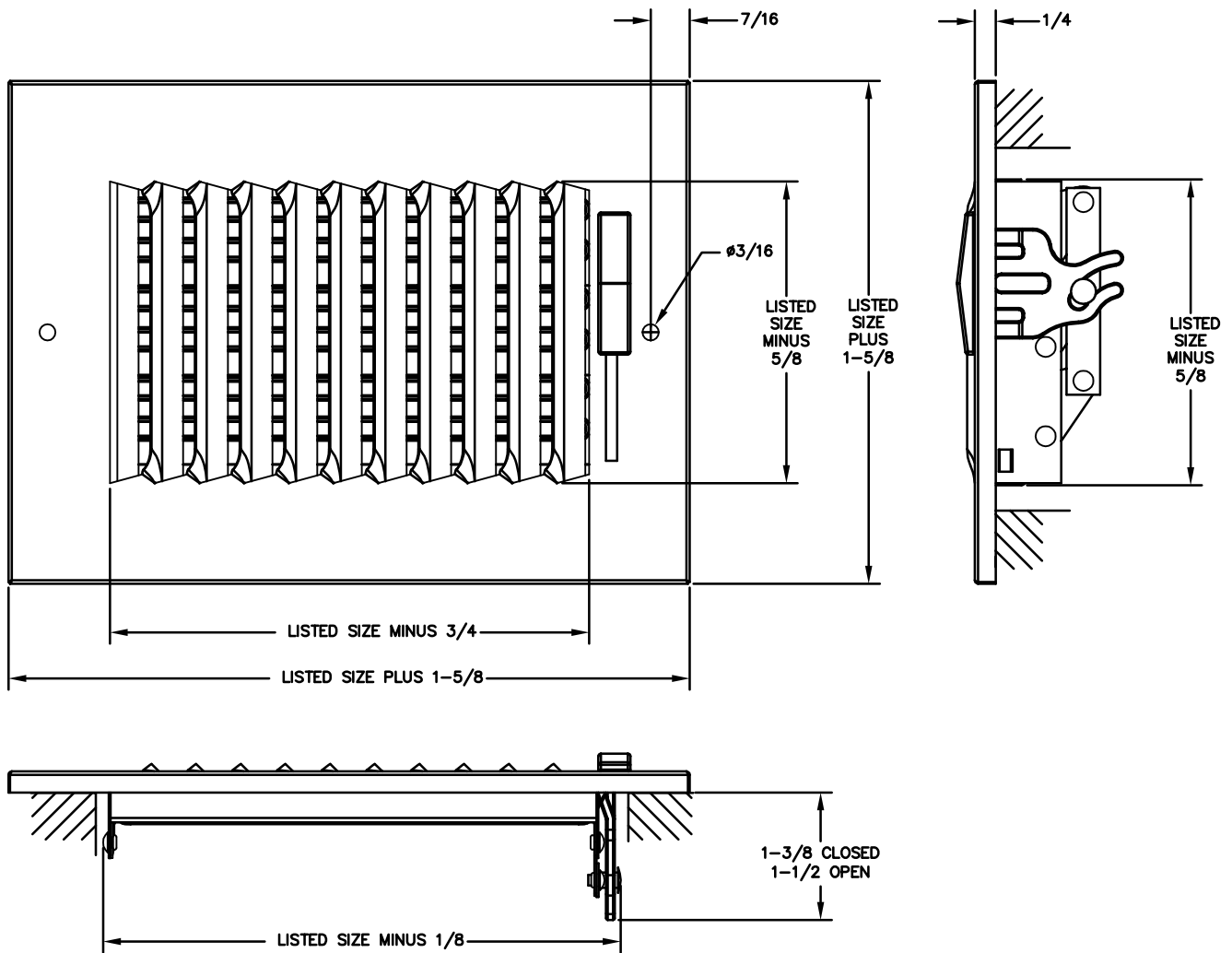


**MODEL 602 & AL602**  
**STAMPED STRAIGHT BLADE SUPPLY**  
**WITH MULTI-LOUVER DAMPER**

STANDARD INDUSTRY TOLERANCES APPLY. SPECIFICATIONS SUBJECT TO CHANGE WITHOUT NOTICE.



Model 602/AL602 is a stamped straight blade supply for ceiling or sidewall installation. The 602/AL602 features a one-piece faceplate with a multi-louver steel damper for volume control. Fins spaced at  $1/2$ " and set at 45 degrees. Two way deflection is ideal for heating or cooling. Available in steel or aluminum. Standard finish is white.

PROJECT: \_\_\_\_\_  
 ARCHITECT: \_\_\_\_\_  
 ENGINEER: \_\_\_\_\_  
 CONTRACTOR: \_\_\_\_\_  
 LOCATION: \_\_\_\_\_

