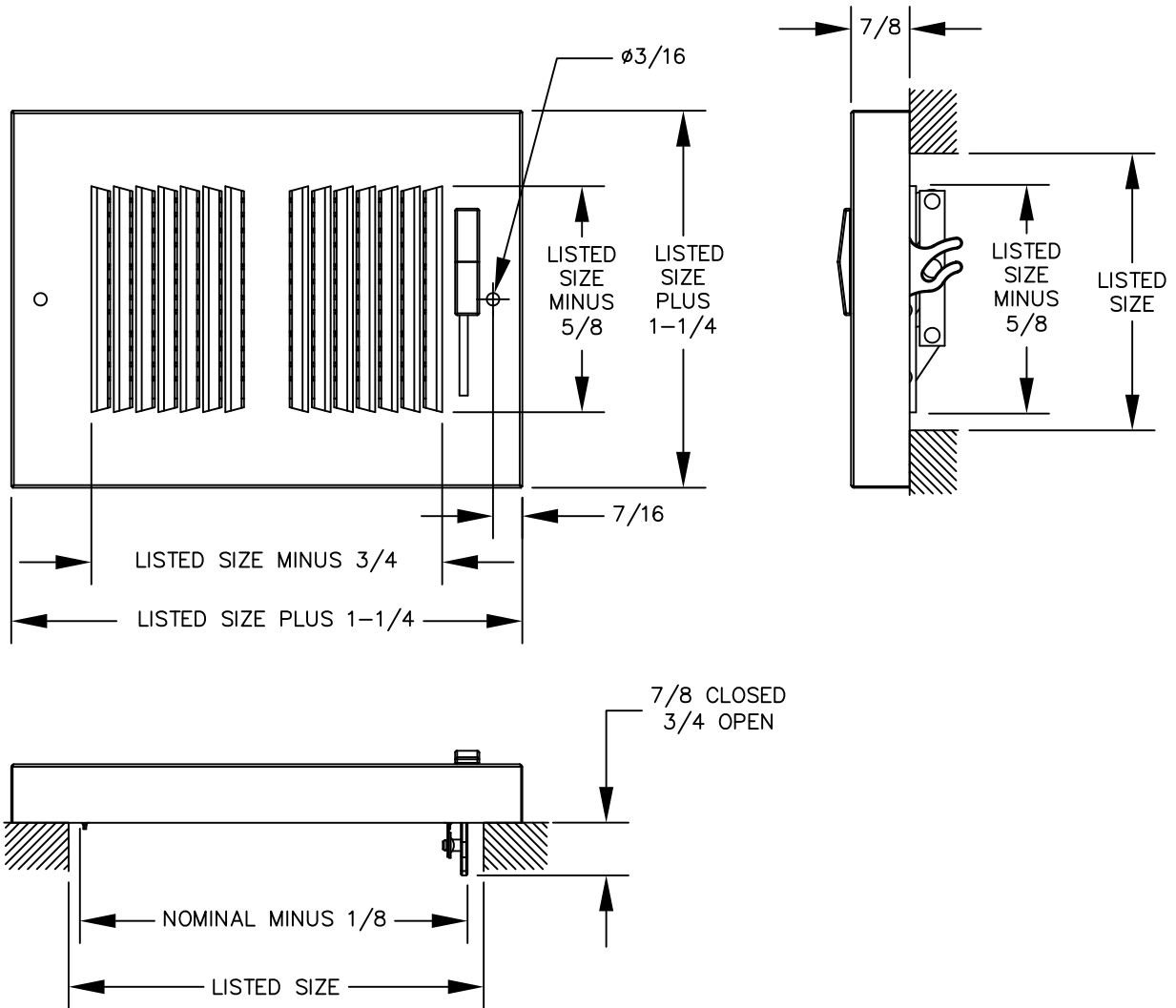


# MODEL 667

## BASEBOARD SUPPLY REGISTER WITH 1/3 INCH FIN SPACING

### 2-WAY

STANDARD INDUSTRY TOLERANCES APPLY. SPECIFICATIONS SUBJECT TO CHANGE WITHOUT NOTICE.



Model 667 is a stamped straight blade baseboard register with mounting holes. Constructed of steel with 1/3 inch fin spacing set at 45 degrees, it features a multi-louvered damper. Standard finish is white.

PROJECT: \_\_\_\_\_  
 ARCHITECT: \_\_\_\_\_  
 ENGINEER: \_\_\_\_\_  
 CONTRACTOR: \_\_\_\_\_  
 LOCATION: \_\_\_\_\_

